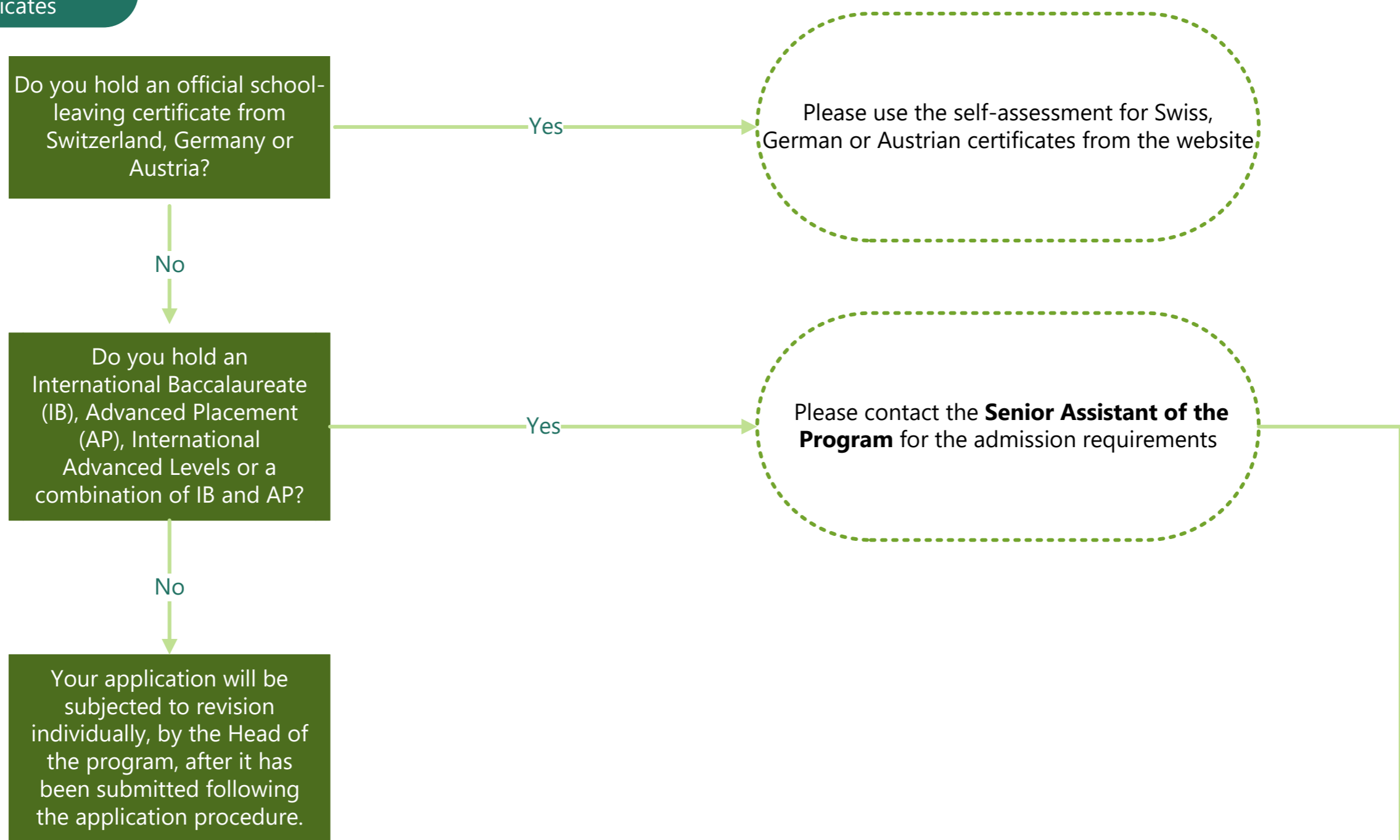


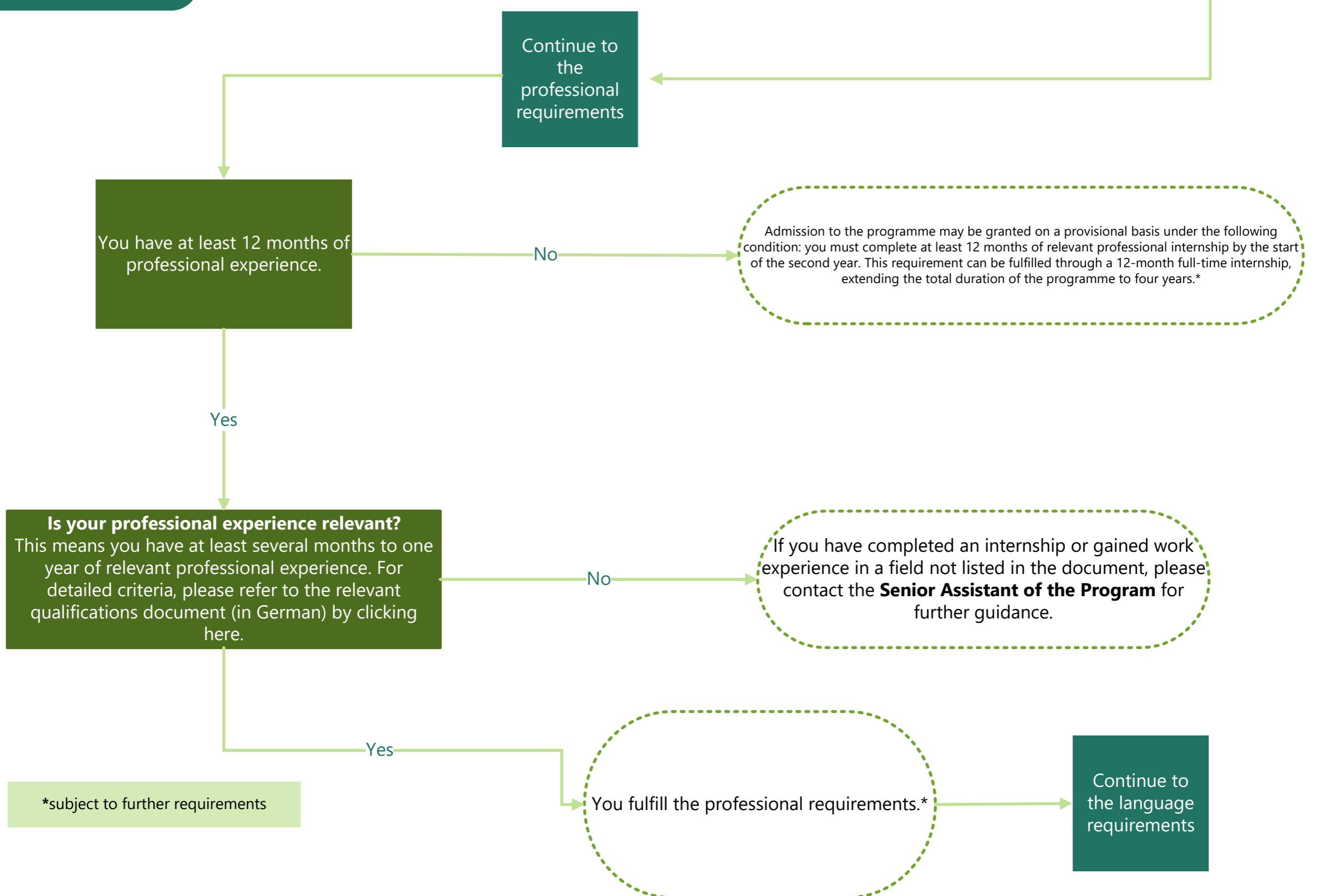
Self-assessment for admission to the bachelor's program Energy and Environmental Systems Engineering (ESEE) International school-leaving certificates

The flowchart below will help you evaluate your chances of admission. Please note that the university can officially review your application only after it has been submitted. The assessment process consists of three parts (school-leaving qualifications, work experience, language skills). If you have any questions regarding the admission process, please do not hesitate to contact us at the **Bachelor's & Master's Secretariat**.

Requirements regarding school-leaving certificates



Professional requirements



*subject to further requirements

Language requirements

You have an English certificate at CEFR Level C1 or a comparable level from other **recognised certificates** *or* English is your native language *or* You have attended secondary school, studied or worked in English for at least two years (full time).

No

You will be provisionally admitted to the program (provided that the academic and professional admission requirements are fulfilled) on condition that you submit your CEFR Level C1 English certificate before the start of the program.

Yes

You fulfill the language requirements.*

Definitive admission is granted, provided that the academic and professional admission requirements are fulfilled.*

*subject to further requirements